

## Air heater type S21 435 to 800W



**Function:** Air heater with external air supply by means of fan or compressed air.  
**CAUTION !!!** Device is not pressure-resistant !!!

**Configuration:** Default: Temperature control with potentiometer (1 – 8)  
 - alternatively with external potentiometer (cable length 5 meter) or  
 - external control by control unit or SPS (cable length 5 meter)  
 Device is equipped with a reliable heating element protection. The integrated device protection turns off the device when tripped and resets automatically after cooling down. A reset is not required.

**Features:** Special designs:  
 - for devices with electronic equipment max. supply air temperature 50°C  
 - the unit is available without electronics (without heating element protection)  
 - for devices without electronic equipment max. supply air temperature 80°C

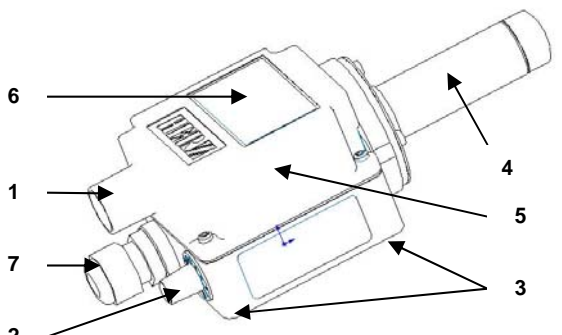
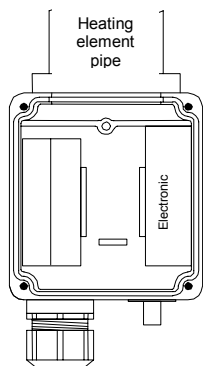
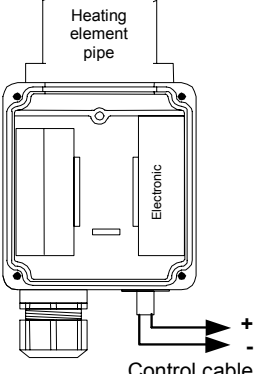
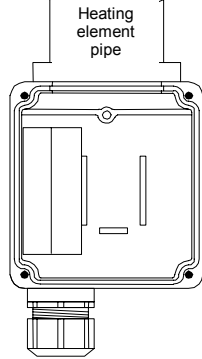
**Power:** 550 Watt, 800 Watt  
**Voltage:** 120 VAC, 230 VAC

### Technical data:

Item number	5101354	on request	5101351 (5101352*)
<b>Voltage</b>	VAC 120		230
<b>Frequency</b>	Hz	50 / 60	
<b>Power</b>	KW 0,55	0,435	0,8
<b>Current</b>	A 4,6		3,5
<b>Max. temperature</b>	°C	650	
<b>Min. air volume</b>	l/min 120 (150*)	90 (122*)	140 (185*)
<b>Weight</b>	kg	0,3	
<b>Air intake</b>	Ø mm	19	
<b>Air outlet</b>	Ø mm	13	
<b>Heater tube</b>	Ø mm	21	
<b>Dimensions</b>	mm (L x W x H)	188 x 69,5 x 58	
<b>Conformity mark</b>			
<b>Protection class II</b>			

\*without electronic

## Air heater type S21 435 to 800W





Product description:	Connection scheme:		
		<p><b>Default with potentiometer</b></p> <p>N, L1 = Main connection according to data plate</p>	 <p><b>External control</b></p> <p>N, L1 = Main connection according to data plate</p> <p>Digital signal (PWM max. 0,5Hz) 10-24VDC + = brown - = white</p>
<ol style="list-style-type: none"> <li>1. Cable fitting mains supply</li> <li>2. Potentiometer 0-8 (control cable für ext. control); (no Potentiometer for devices without electronic)</li> <li>3. Mounting on bottom of housing M 4 (screw depth 7 mm)</li> <li>4. Heatin element pipe Ø21mm</li> <li>5. Cover</li> <li>6. Data plate</li> <li>7. Air intake Ø19mm</li> </ol>		<p><b>Version without electronics</b></p> <p>N, L1 = Main connection according to data plate</p>	

## Air heater type S21 435 to 800W

**Available versions:**

Item no.	Description
<b>5101354</b>	<b>Air heater S21 120 VAC 550 Watt with potentiometer</b>
5101343	Air heater S21 120 VAC 550 Watt for external control with 5 meter control cable
<b>5101351</b>	<b>Air heater S21 230 VAC 800 Watt potentiometer</b>
5110304	Air heater S21 230 VAC 800 Watt for external control with 5 meter control cable
5110306	Air heater S21 230 VAC 800 Watt for external potentiometer with 5 meter control cable
<b>5101352</b>	<b>Air heater S21 230 VAC 800 Watt without electronic</b>

**Accessories:**

Item no.	Description
5107282	 Flange connector
5107144	 Tubular nozzle Ø 5mm
5107145	 Tubular nozzle Ø 10mm
5107324	 Spoon-reflector Ø 10 mm for soldering of solder-shrinkage connections and for shrinkage of PVC, PTFE, FEP shrink hose. Push-fit for nozzle Ø 5mm

## Air heater type S21 435 to 800W

### Combination possibilities for devices WITH electronic \*:

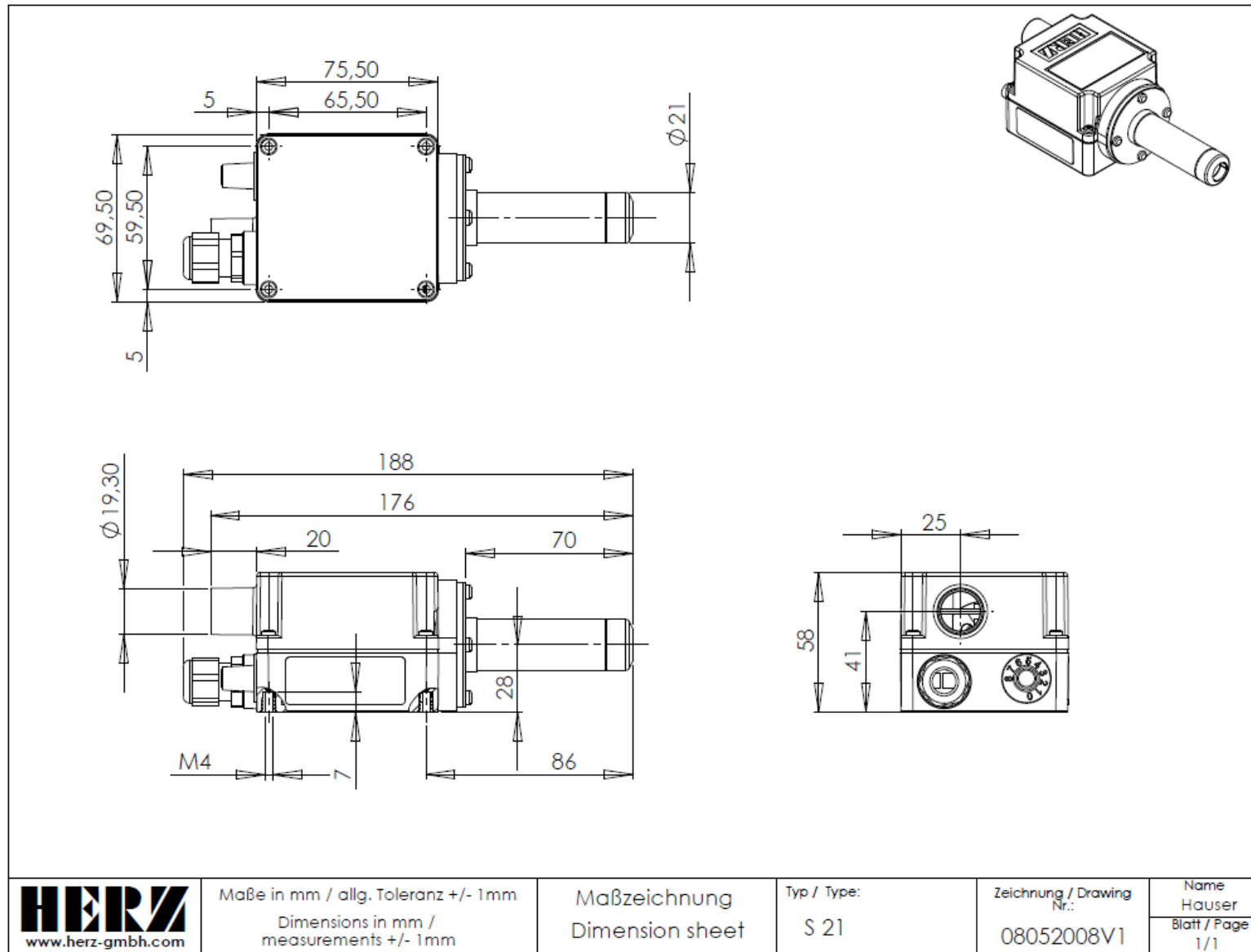
**Measuring point:** 3.0 mm after the air outlet pipe adapter – without nozzle, measured at the hottest point  
**Hose length:** 1,0 m  
**Air supply:** Blower 400 Volt, 50 Hz (HD = High pressure blower, MD = Medium pressure blower)  
**Air flow:** NI / min = standard liters per minute according to DIN 1343

**CAUTION:** Air flow and temperature are indicative which can change due to external influences and changes air hose diameter and length!

Blower type	Quantity, air heater type, voltage, power	Air flow at 50 Hz with heating [NI / min.]	Maximum temperature at 50 Hz [°C]
HD140	1 x S21; 230VAC; 435W	230	290
	2 x S21; 230VAC; 435W	2 x 200	300
	4 x S21; 230VAC; 435W	4 x 160	310
	1 x S21; 230VAC; 0,8KW	330	320
	2 x S21; 230VAC; 0,8KW	2 x 240	380
	4 x S21; 230VAC; 0,8KW	4 x 190	430

\*Data without guarantee

Air heater type S21 435 to 800W



## Air heater type S21 435 to 800W

### **HERZ** GmbH

Kunststoff- & Wärmetechnologie  
Biberweg 1  
DE – 56566 Neuwied  
Tel.: +49 (0)2622-81086; Fax: +49 (0)2622-81080  
www.herz-gmbh.com; info@herz-gmbh.com

### **HERZ** Austria GmbH

Kunststoff- & Wärmetechnologie  
Gleinser Weg 27  
AT – 6141 Schönberg / Tirol  
Tel.: +43 (0)5225-63113; Fax: +43 (0)5225-6311385  
www.herz-austria.at; herz.schoenberg@herz-gmbh.com

### **HERZ** Hungária Kft.

Műanyag- es hőlégtéchnika  
Pesti úti iparterület HRSZ.: 3335  
HU – 2225 Üllő  
Tel.: +36 (06)29-522400; Fax: +36 (06)29-522 410  
www.herz-hungaria.hu; herz@herz-hungaria.hu

### **HERZ** Bulgaria OOD

Boul. Assen Yordanov 10  
BG – 1592 Sofia  
Tel.: +359 (0)2-9790351; Fax: +359(0)2-9790793  
www.herz-bulgaria.com; office@herz-bulgaria.com

### **HERZ** GmbH

Kunststoff- & Wärmetechnologie  
Am Arenberg 26A  
DE – 86456 Gablingen  
Tel.: +49 (0)8230-85085; Fax: +49 (0)8230-85087  
www.herz-gmbh.com; robert.einberger@herz-gmbh.com

### **HERZ** Austria GmbH

Kunststoff- & Wärmetechnologie  
Johann-Galler-Str. 20 IZ – NÖ – Nord  
AT – 2120 Wolkersdorf i. Weinviertel  
Tel.: +43 (0)2245-82494-0; Fax: +43 (0)2245-82494-9  
www.herz-austria.at; herz.wolkersdorf@herz-gmbh.com

### **HERZ** Polska Sp.z o. o.

Technologie obróbki tworzyw sztucznych  
Ul. Wiertnicza 110  
PL – 02-952 Warszawa  
Tel.: +48 (0)22-8428583; Fax: +48 (0)22-8429700  
www.herz.polska.pl; herz.polska@herz-gmbh.com